

ORDINANCE No. 2002-09

**AN ORDINANCE MODIFYING THE WALTON COUNTY
CODE TO ADOPT THE 2001 FLORIDA BUILDING CODE
AND RELATED CODES, AND WIND-BORNE DEBRIS
REGION AND BASIC WIND SPEED MAP, AND PROVIDING
AN EFFECTIVE DATE.**

WHEREAS, The State of Florida has created the Florida Building Code and related codes, and

WHEREAS, Walton County is mandated to adopt these codes, and

WHEREAS, a part of the Florida Building Code is the Wind-Borne Debris Region and Basic Wind Speed map, and

WHEREAS, the local municipality has the authority to modify the Wind-Borne Debris Region and Basic Wind Speed map to better align the curves with physical features more readily identifiable on the ground;

**NOW THEREFORE IT IS ORDAINED BY THE WALTON COUNTY BOARD OF
COUNTY COMMISSIONERS:**

Section 1. The Walton County Code is hereby amended as follows.

(Deletions are in ~~strikethrough~~; additions are underlined.)

Sec. 6-26. Adoption.

The following are adopted by reference:

(1) The editions of the ~~Standard Building~~ Florida Building Code, ~~Building~~; ~~Standard~~ Florida Building Code, Plumbing; ~~Code~~, ~~Standard~~ Florida Building Code, Mechanical; ~~Code~~, ~~Standard~~ Florida Building Code, Fuel Gas; ~~Code~~ and other codes specified or referenced in specified in F.S. Chapter 553.73.

(2) The edition of the National Electrical Code specified in F.S. ~~§ 553.19~~. as now or hereafter amended.

2002-09

- (3) The 1994 edition of the Standard Swimming Pool Code, as now or hereafter amended.
- (4) The Florida Model Energy Code, as now or hereafter amended.
- (5) The 1985 Standard Unsafe Building Abatement Code.
- (6) The Walton County Wind-Borne Debris Region and Basic Wind Speed Map (Exhibit A)

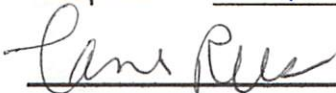
Section 2. Severability.

If any part of this ordinance is found to be unconstitutional by a court of competent authority, that part may be stricken without effect on the balance of the ordinance.

Section 3. Effective Date.

In accordance with 125.66, Florida Statutes, a certified copy of this ordinance shall be filed with the Department of State by the Clerk of the Board of County Commissioners within ten (10) days after enactment by said Board and shall take effect upon receipt of official acknowledgement from that office that said ordinance has been filed, or on the effective date of the Florida Building Code, whichever is later.

Adopted the 9th day of April, 2002

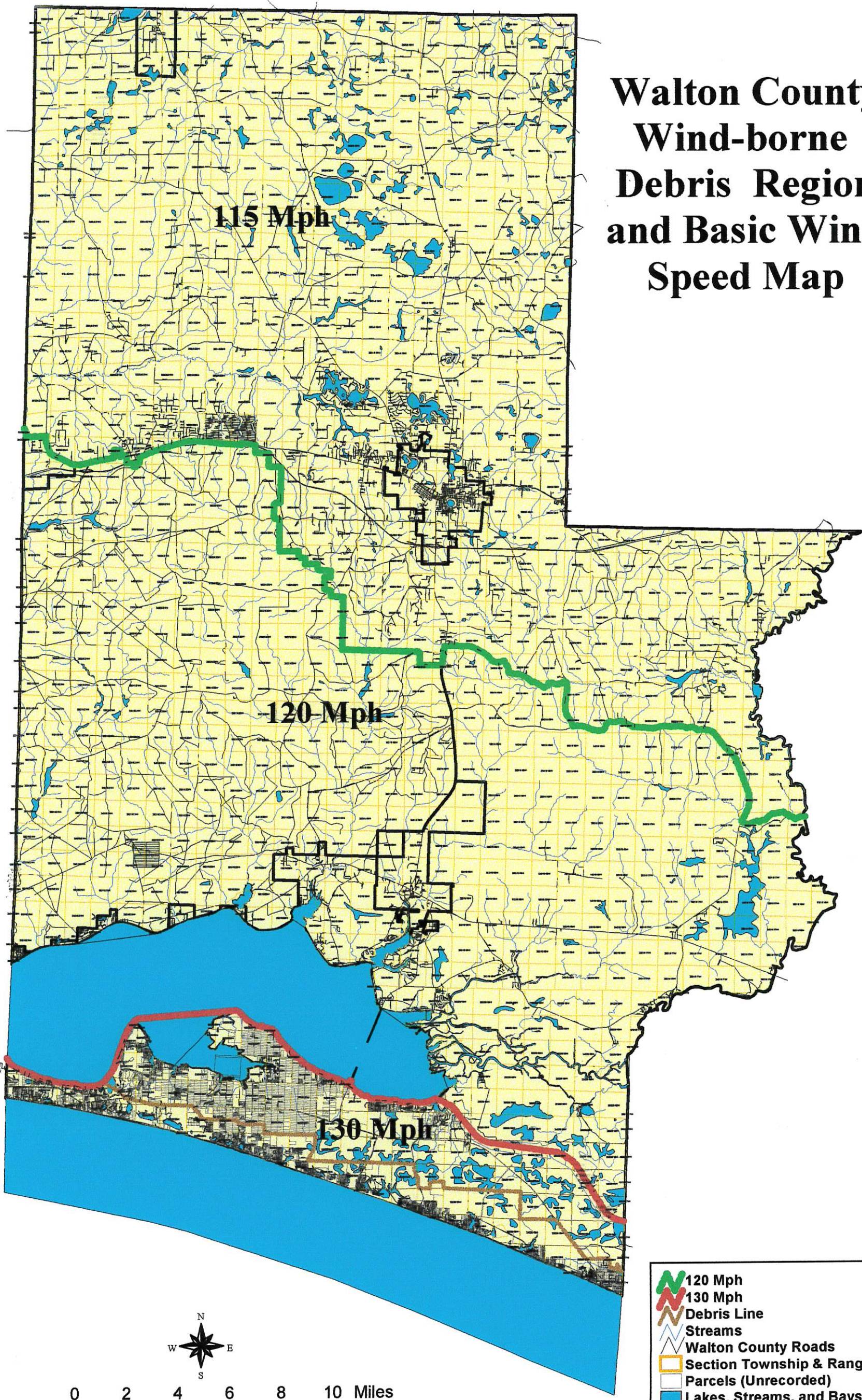


LANE REES, CHAIRMAN
BOARD OF COUNTY COMMISSIONERS
WALTON COUNTY, FLORIDA

ATTEST:


Deputy Clerk

Walton County Wind-borne Debris Region and Basic Wind Speed Map



- 120 Mph
- 130 Mph
- Debris Line
- Streams
- Walton County Roads
- Section Township & Ranges
- Parcels (Unrecorded)
- Lakes, Streams, and Bays
- County Boundary Line