

Ordinance Number 2012-12

AN ORDINANCE OF WALTON COUNTY, FLORIDA, ADOPTING A FUTURE LAND USE MAP AMENDMENT TO THE WALTON COUNTY COMPREHENSIVE PLAN; SETTING FORTH THE AUTHORITY FOR ADOPTION; AMENDING THE FUTURE LAND USE MAP; REPEALING ALL ORDINANCES IN CONFLICT HEREWITH; PROVIDING FOR SEVERABILITY AND CONFLICTS; AND PROVIDING FOR AN EFFECTIVE DATE.

**WHEREAS**, the Legislature of the State of Florida has, in Chapter 125, Florida Statutes, delegated the responsibility to local governmental units to adopt regulations designed to promote the public health, safety, and general welfare of its citizens; and

**WHEREAS**, Chapter 163, Florida Statutes, establishes the Local Government Comprehensive Planning and Land Development Regulation Act; and

**WHEREAS**, Chapter 163, Florida Statutes, requires local governments desiring to revise their comprehensive plans to prepare and adopt comprehensive plan amendments; and

**WHEREAS**, pursuant to Section 163.3184, Florida Statutes, the Walton County Planning Commission and Board of County Commissioners have held public hearings with due public notice and received public comments concerning the subject map amendment to the Comprehensive Plan; and

**WHEREAS**, after due public notice having been provided, the Walton County Planning Commission held a public hearing on April 12, 2012, and thereafter, the Board of County Commissioners held a public hearing on May 8, 2012 to consider the adoption of the proposed amendment to its comprehensive plan, in accordance with Section 163.3184, Florida Statutes; and

**WHEREAS**, the Walton County Board of County Commissioners considered all oral and written comments received during such public hearings, including the data and analyses provided for this amendment, the recommendations of the Planning Commission; and

**WHEREAS**, in the exercise of its authority, the Walton County Board of County Commissioners has determined that the adoption of this amendment is in the best interest and welfare of the residents of Walton County; and

**WHEREAS**, this ordinance shall be considered a final order as required in Section 10.03.03 of the Walton County Land Development Code.

2012-12

NOW, THEREFORE, BE IT ORDAINED by the Board of County Commissioners of Walton County, Florida, as follows:

**SECTION I: PURPOSE AND INTENT.**

This Ordinance is hereby enacted to carry out the purpose and intent of, and exercise the authority set out in, the Local Government Comprehensive Planning and Land Development Regulation Act, Chapter 163, Part II, Florida Statutes, as amended.

**SECTION II: FUTURE LAND USE MAP AMENDMENT.**

The Board of County Commissioners hereby adopts the following amendment to the Future Land Use Map of the Walton County Comprehensive Plan, which is attached hereto as Exhibit "A", and incorporated herein by reference as a part hereof, being an amendment to the Future Land Use Map:

**FINDINGS OF FACT: The Board of County Commissioners finds as follows:**

1. The applicants name and address:  
Walton County Board of County Commissioners  
76 North 6<sup>th</sup> Street  
DeFuniak Springs, Florida 32435
  
2. Amendment Number 2012-26: Amend the adopted Future Land Use Map designation of 6.19 +/- acres in Walton County north of the Choctawhatchee Bay on parcel identified as **01-1N-19-17000-001-0000**, from Estate Residential to Industrial. The subject parcel is located approximately 300 feet north of intersection of Rock Hill Road and OTI Road, approximately 1.2 miles east of the intersection of US 331 and Rock Hill Road, in Walton County, Florida, in Walton County, Florida, more particularly described as:

### Legal Description:

A 6.13 acre parcel of land lying in and being a portion of the Southeast 1/4, of the Southeast 1/4, of Section 1, Township 1 North, Range 19 West, Walton County, Florida, being more particularly described as follows;

Commence at an existing 4" by 4" concrete monument, (no identification), marking the Southeast corner of the Southeast 1/4, of the Southeast 1/4, of Section 1, Township 1 North, Range 19 West, Walton County, Florida;

THENCE North 01 degrees 19 minutes 31 seconds East for a distance of 354.45 feet along the East boundary line of the Southeast 1/4, of the Southeast 1/4, of said Section 1, Township 1 North, Range 19 West to a 1/2" iron rod and cap PLS 2495, marking the Point of Beginning;

THENCE North 88 degrees 37 minutes 06 seconds West for a distance of 1067.50 feet to a 1/2" iron rod and cap PLS 2495;

THENCE North 01 degrees 19 minutes 31 seconds East for a distance of 250.00 feet to a 1/2" iron rod and cap PLS 2495, in an existing generally East - West Chain link fence line;

THENCE South 88 degrees 37 minutes 06 seconds East for a distance of 1067.50 feet along said generally East - West chain link fence line to a 1/2" iron rod and cap PLS 2495, on the East boundary line of the Southeast 1/4, of the Southeast 1/4, of said Section 1;

THENCE South 01 degrees 19 minutes 31 seconds West for a distance of 250.00 feet along said East boundary line to the point of beginning.

Together with and subject to covenants, easements, and restrictions of record.

Said property contains 6.13 acres more or less.

3. The proposed amendment is compatible with future development in the area of the subject property.
4. The property is currently served with adequate public facilities.
5. The property is currently designated as Estate Residential.
6. Upon the legally effective date of this Ordinance, the property will be designated as Industrial.
7. Any future development under this amendment will be required to meet all of the standards of the Walton County Comprehensive Plan and Land Development Code.

### SECTION III. CONFLICT WITH OTHER ORDINANCES OR CODES

All Ordinances or parts of Ordinances of the Code of Ordinances of Walton County, Florida, in conflict with the provisions of this Ordinance are hereby repealed to the extent of such conflict.

### SECTION IV. SEVERABILITY

Should any word, phrase, sentence, or section of this Ordinance be held by a court of competent jurisdiction to be illegal, void, unenforceable, or unconstitutional, then such shall be severed from this Ordinance, and the remainder of the Ordinance shall remain in full force and effect.

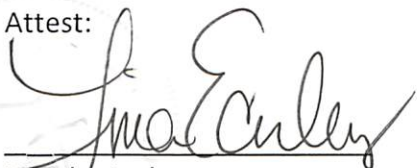
**SECTION V. EFFECTIVE DATE**

This ordinance shall take effect as provided by law.

Duly enacted, by the Board of County Commissioners of Walton County, Florida,  
at a regularly scheduled public hearing on the 8th day of May, 2012.

BOARD OF COUNTY COMMISSIONERS  
WALTON COUNTY, FLORIDA

Attest:

  
for Martha Ingle  
Clerk of Court

By:

  
Scott Brannon, Chair

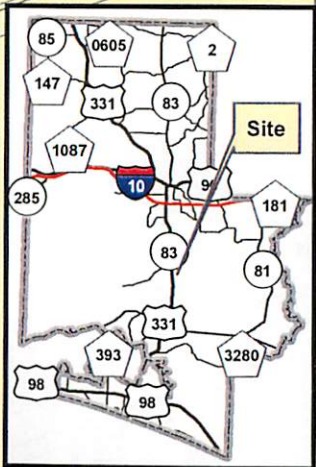
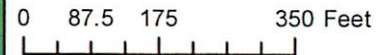
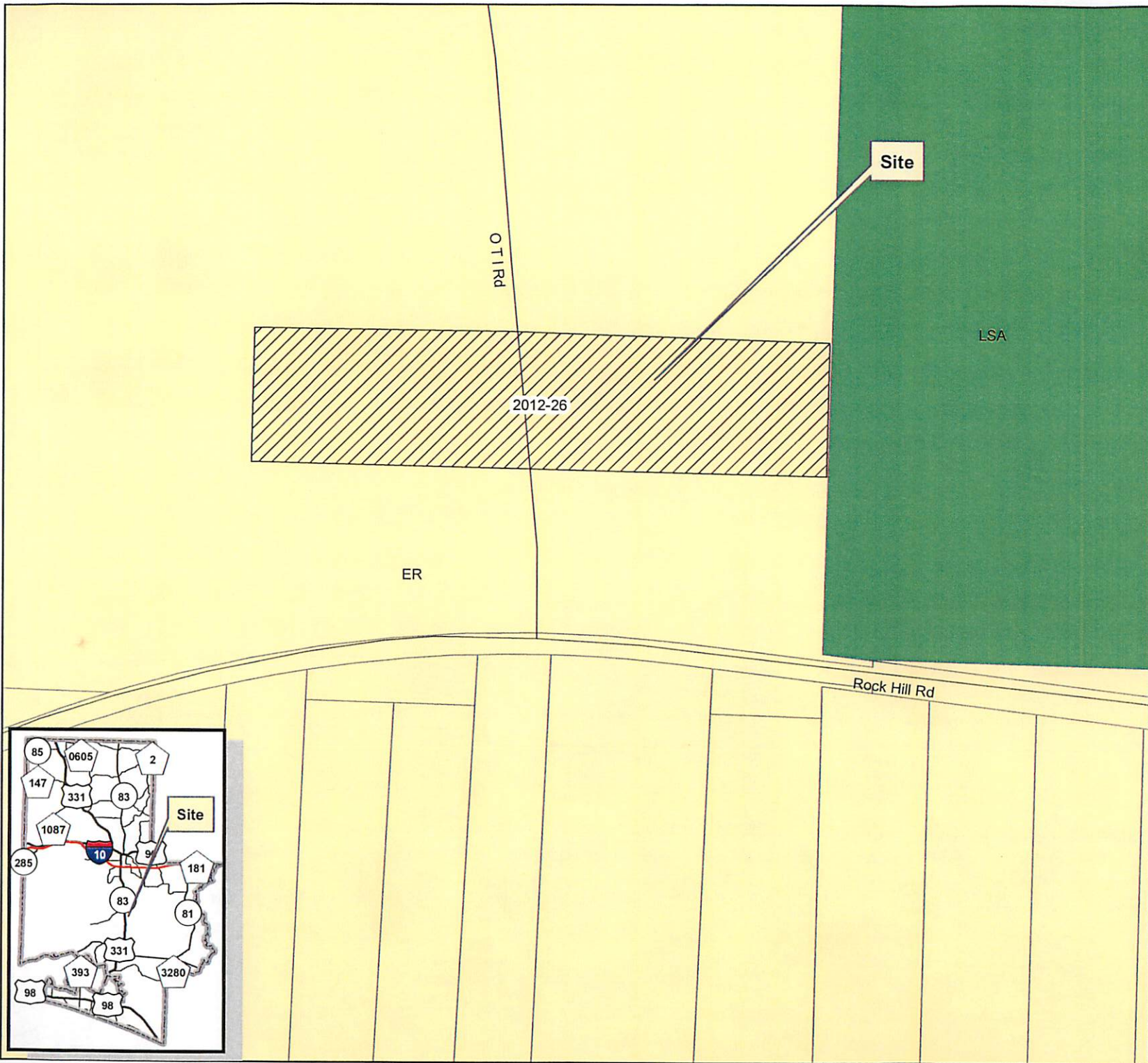


SSA 2012-26

FUTURE LAND USE

From: Estate Residential  
To: Industrial

Total Acres: 6.19+/-



Walton County Planning and Development Services  
This GIS data is not a legal representation of the features depicted; any assumption of the legal status of this data is hereby disclaimed. Features are approximate, and are not necessarily accurate to mapping, surveying, or engineering standards.  
<al>, 20120328;SSA\_2012-26