

Ordinance Number 2019- 10

AN ORDINANCE RELATING TO WALTON COUNTY, FLORIDA; AMENDING Ordinance 2018-28 AS AMENDED; AMENDING THE ZONING DISTRICT AS DEPICTED IN THE ATTACHED MAPS; APPROVING THE AMENDMENTS TO THE OFFICIAL ZONING MAP OF THE LAND DEVELOPMENT CODE AS DEPICTED IN THE ATTACHED MAPS; AMENDING ORDINANCE 1990-15 AS AMENDED; AMENDING THE FUTURE LAND USE MAPS OF THE WALTON COUNTY COMPREHENSIVE PLAN; CHANGING THE LAND USE CLASSIFICATIONS; REPEALING ALL ORDINANCES IN CONFLICT HEREWITH; PROVIDING FOR SEVERABILITY AND CONFLICTS PROVIDING FOR CODIFICATION; AND PROVIDING FOR AN EFFECTIVE DATE.

**WHEREAS**, the Legislature of the State of Florida has, in Chapter 125, Florida Statutes, delegated the responsibility to local governmental units to adopt regulations designed to promote the public health, safety, and general welfare of its citizens; and

**WHEREAS**, Chapter 163, Florida Statutes, establishes the Local Government Comprehensive Planning and Land Development Regulation Act; and

**WHEREAS**, Chapter 163, Florida Statutes, requires local governments desiring to revise their comprehensive plans to prepare and adopt comprehensive plan amendments; and

**WHEREAS**, pursuant to Section 163.3184, Florida Statutes, the Walton County Planning Commission and Board of County Commissioners have held public hearings with due public notice and received public comments concerning the subject map amendment to the Comprehensive Plan; and

**WHEREAS**, after due public notice having been provided, the Walton County Planning Commission held a public hearing on March 14, 2019 and the Walton County Board of County Commissioners held a public hearing on April 9, 2019 to consider the adoption of the proposed amendment to its comprehensive plan, in accordance with Section 163.3184, Florida Statutes; and Section 125.66; and

**WHEREAS**, the Walton County Board of County Commissioners considered all oral and written comments received during such public hearings, including the data and analyses provided for this amendment, the recommendations of the Planning Commission; and

**NOW, THEREFORE, BE IT ORDAINED** by the Board of County Commissioners of Walton County, Florida, as follows:

**SECTION I. PURPOSE AND INTENT.**

This Ordinance is hereby enacted to carry out the purpose and intent of, and exercise the authority set out in, the Local Government Comprehensive Planning and Land Development Regulation Act, Chapter 163, Part II, Florida Statutes, as amended.

**SECTION II. FUTURE LAND USE MAP AND OFFICIAL ZONING MAP AMENDMENTS.**

The Board of County Commissioners hereby adopts the following amendment to the Comprehensive Plan Future Land Use Map and the Official Zoning Map which will be updated consistent with the action of the Board of County Commissioners as set forth in this Ordinance:

1. Application number LUM18-000014 Christ The King Episcopal Church Education Building #2 SSA requesting to amend the adopted Future Land Use Map category and Official Zoning Map district designations on an amendment area that is approximately 9.95+/- acres in size.
2. The amendment area is identified as parcel number(s) 26-25-20-33200-000-0570. A boundary survey of the amendment area is attached as Exhibit 1.
3. The amendment area is currently designated Conservation Residential 2:1 on the Future Land Use Map adopted within the Walton County Comprehensive Plan.
4. The amendment area is currently designated Conservation Residential 2:1 on the Official Zoning Map adopted within the Walton County Land Development Code.
5. Upon the legally effective date of this Ordinance, the Future Land Use Map category for the amendment area will be designated as Institutional. As shown on Exhibit 2, attached
6. Upon the legally effective date of this Ordinance, the Official Zoning Map District for the amendment area will be designated as Institutional As shown on Exhibit 3, attached
7. Any future development under this amendment will be required to meet all of the standards of the Walton County Comprehensive Plan and Land Development Code.

**SECTION III. CONFLICT WITH OTHER ORDINANCES OR CODES.**

All Ordinances or parts of Ordinances of the Code of Ordinances of Walton County, Florida, in conflict with the provisions of this Ordinance are hereby repealed to the extent of such conflict.

**SECTION IV. SEVERABILITY.**

Should any word, phrase, sentence or section of this Ordinance be held by a court of competent jurisdiction to be illegal, void, unenforceable, or unconstitutional, then such shall be severed from this Ordinance, and the remainder of the Ordinance shall remain in full force and effect.

**SECTION V. EFFECTIVE DATE.**

The effective date of this plan amendment, if the amendment is not timely challenged, shall be 31 days after the Ordinance is signed. If the amendment is timely challenged. No development orders, development permits, or development dependent on this amendment may be issued or commence before it has become effective.

Duly enacted, by the Board of County Commissioners of Walton County, Florida at a regularly scheduled public hearing on the 9<sup>th</sup> of April, 2019.

BOARD OF COUNTY COMMISSIONERS  
WALTON COUNTY, FLORIDA

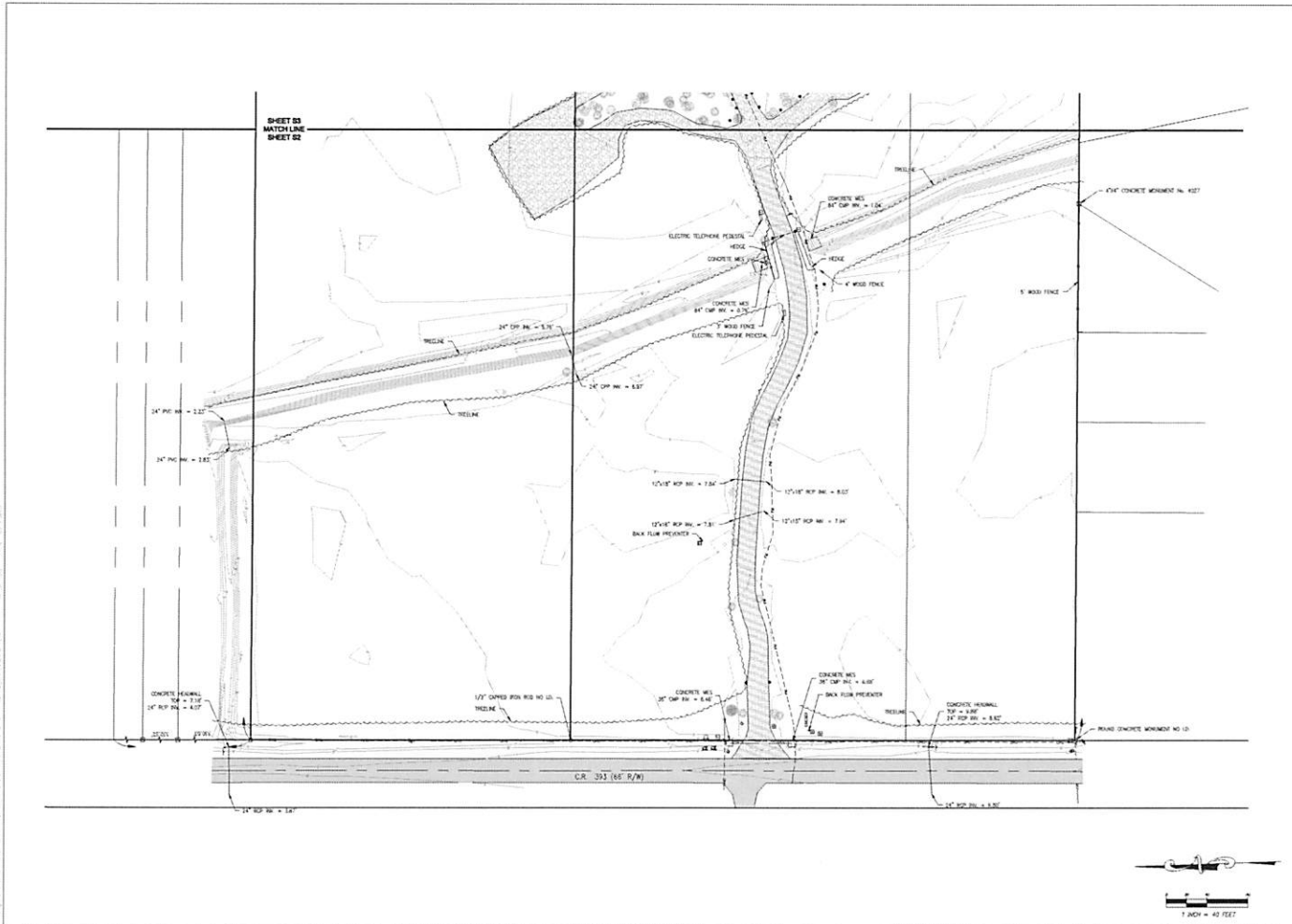
Attest:

Alex Alford  
Alex Alford  
Clerk of Court  
and County Comptroller



Tony Anderson  
Tony Anderson, Chairman  
Board of County Commissioners





SHEET 03  
MATCHLINE  
SHEET 02

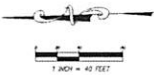
|     |      |          |
|-----|------|----------|
| NO. | DATE | REVISION |
|     |      |          |
|     |      |          |
|     |      |          |

**Dewberry**  
 1000 N. W. 10th St., Suite 100  
 Fort Lauderdale, FL 33304  
 PHONE: (954) 576-1111  
 FAX: (954) 576-1111  
 WWW: WWW.DEBERRY.COM

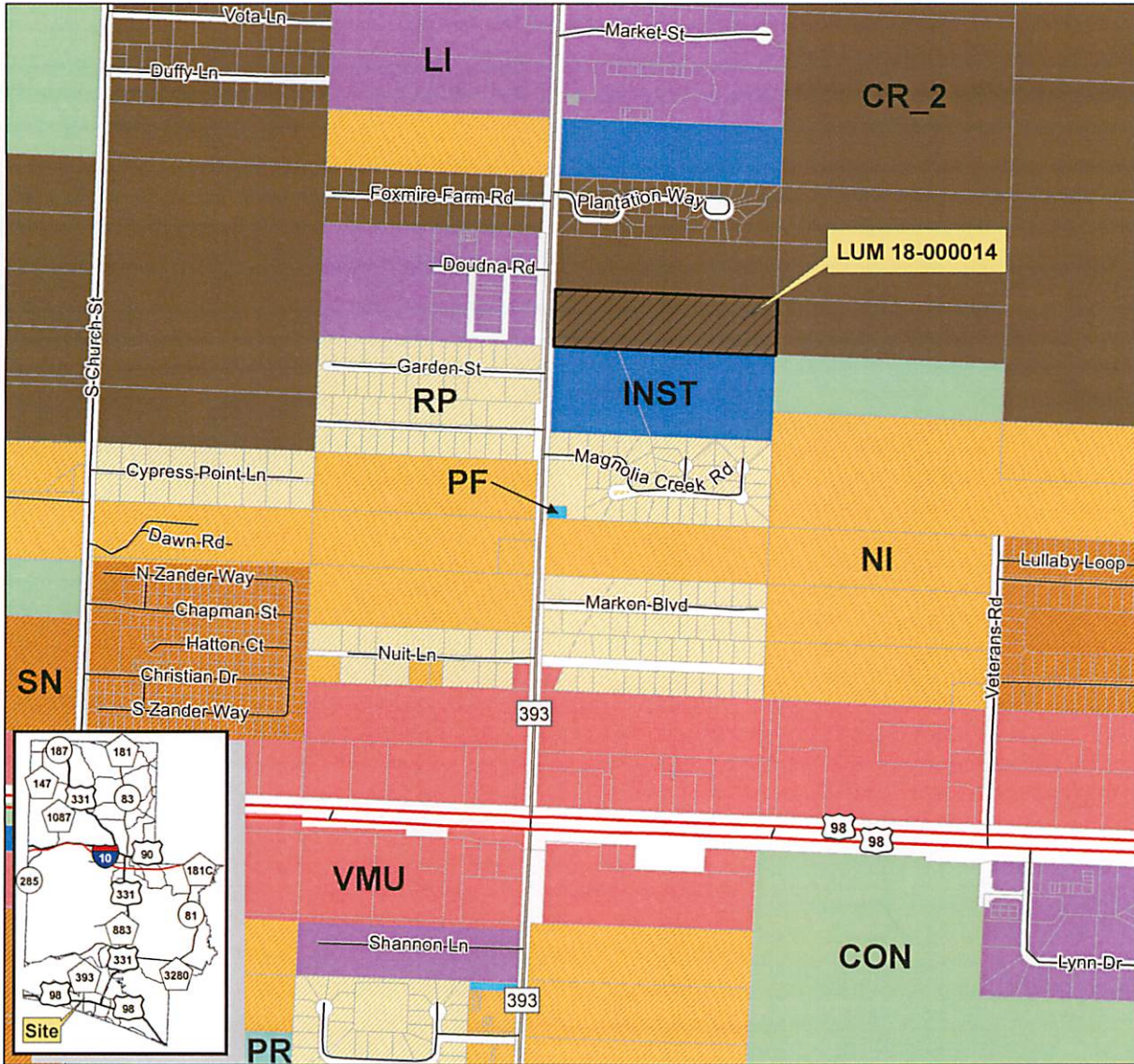
BOUNDARY & TOPOGRAPHIC SURVEY  
 CHRIST THE KING  
 EPISCOPAL CHURCH  
 FORT LAUDERDALE, FLORIDA

PROJECT NO.  
 S10104254  
 SCALE  
 1" = 40'

S2







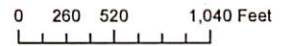
**Christ the King  
Episcopal Church  
Education Building SSA  
(Project #: LUM 18-000014)**

**FUTURE LAND USE**

*Future Land Use*

**From:** Conservation Residential 2:1  
**To:** Institutional

**Total Acres: 9.75 +/-**



**Source Data:**

SSA drawn using PIN 11/08/2018  
 FLU 2011 to 2018 last updated 12/03/2018  
 Parcels last updated 12/02/2018  
 Streets last updated 12/02/2018  
 For additional source information refer to source documentation.



Walton County GIS Department  
 This GIS data is not a legal representation of the features depicted; any assumption of the legal status of this data is hereby disclaimed. Features are approximate, and are not necessarily accurate to mapping, surveying, or engineering standards.  
 <al>, 20190207; Project # 2018-214

